

MICROSCOPE



Bioevopeak

Bioevopeak Co., Ltd.

TEL: +86-531-88982330
FAX: +86-531-88983691
Website: Bioevopeak.com
Email: info@bioevopeak.com
Service: support@bioevopeak.com
Address: 17th Floor, Mingsheng Building, High-tech
Zone, Jinan City

US Office

BIOVOPEAK INC.

113CHERRY ST, #79525, SEATTLE, WA, 98104-2205,
UNITED STATES

ABOUT US

BIOEVOPEAK is a research-and service-driven enterprise in laboratory field with the mission of continuously improving the intelligence, precision, safety and convenience of the laboratory. Based on independent manufacturing capability, professional integration of worldwide laboratory resources and localized after-sales service network, we provide one-stop service for all customers.



CONTENT

- Biological Microscope 01
- Inverted Microscope 21
- Fluorescence Microscope 23
- Metallurgical Microscope 27
- Polarizing Microscope 29
- Stereoscopic Microscope 31
- Teaching Microscope 35
- Digital Microscope 39



Biological Microscope

MSC-B102(Siedentopf/Sliding)



Siedentopf



Sliding



Features

- LCD display system
7-inch high-definition imaging equipment, used in combination with a microscope, with the observation effect of the eye at each multiple, display mode: 16:9 / 4:3; screen resolution: 1024 * 600.
- Digital display storage system
10-inch display screen, With 8.0M HDMI camera, the output resolution of HDMI is 720P@ 60fps; the photo resolution is 3840 * 2160; remote control is adopted.

Specification

Model	MSC-B102(Siedentopf/Sliding)
Viewing Head	Siedentopf Binocular Head Inclined at 45°interpupillary (55-75mm)
Eyepiece	Wide Field eyepiece WF10X18mm
Nosepiece	Quadruple Nosepiece
Objective	Achromatic Objective 4X,10X,40X,100X
Stage	Double Layers Mechanical Stage 115X125mm/ 70X30mm
Condense	Abbe NA1.25 with Iris Diaphragm & Filter
Focusing System	Coaxial Coarse and Fine Adjustment, Fine Division 0.002mm, Fine Stroke 0.2mm per Rotation, Moving Range 20mm
Illumination	LED Illumination, Brightness Adjustable Halogen Lamp 100V-240V/ 6V20W Plan-concave Mirror
Package	Styrofoam Carton Wooden Case

Biological Microscope

MSC-B102T(Siedentopf/Sliding)



Siedentopf



Sliding

Features

- Camera accessories
A camera can be added to the Trinocular Head. USB 2.0 Camera/CCD/win10 Pad/Digital display.
- LCD display system
7-inch high-definition imaging equipment, used in combination with a microscope, with the observation effect of the eye at each multiple, display mode: 16:9 / 4:3; screen resolution: 1024 *600.
- Digital display storage system
10-inch display screen, With 8.0M HDMI camera, the output resolution of HDMI is 720P@ 60fps; the photo resolution is 3840 * 2160; remote control is adopted.



Specifications

Model	MSC-B102T(Siedentopf/Sliding)
Viewing Head	Siedentopf free Trinocular Head Inclined at 45°interpupillary (55-75mm)
Eyeiece	Wide Field eyepiece WF10X18mm
Nosepiece	Quadruple Nosepiece
Objective	Achromatic Objective 4X,10X,40X,100X
Stage	Double Layers Mechanical Stage 115X125mm/ 70X30mm
Condense	Abbe NA1.25 with Iris Diaphragm & Filter
Focusing System	Coaxial Coarse and Fine Adjustment, Fine Division 0.002mm, Fine Stroke 0.2mm per Rotation, Moving Range 20mm
Illumination	LED Illumination, Brightness Adjustable
	Halogen Lamp 100V-240V/ 6V20W Plan-concave Mirror
Package	Styrofoam
	Carton Wooden Case
Filters	White Filter
Optional	Microscope Camera/Win10 pad/Digital display

Biological Microscope

MSC-B103(Sliding)



Features

This instrument complies with the principle of ergonomics, with low operation long time observation of fatigue, superior optical properties; suitable for all levels of medical institutions, do research demonstration Jishengjitong laboratory routine inspection, biology, bacteriology, clinical trials and teaching.



Specifications

Model	MSC-B103(Sliding)
Viewing Head	Sliding Binocular Head, Inclined at 45, Interpupillary 55-75mm
Eyepiece	Wide Field eyepiece WF10X18mm
Nosepiece	Quadruple Nosepiece
Objective	Achromatic Objective 4X,10X,40X,100X
Stage	Double Layers Mechanical Stage 115X125mm/ 70X30mm
Condense	Abbe NA1.25 with Iris Diaphragm & Filter
Focusing System	Coaxial Coarse and Fine Adjustment, Fine Division 0.002mm, Fine Stroke 0.2mm per Rotation, Moving Range 20mm
Illumination	LED Illumination, Brightness Adjustable
	Halogen Lamp 100V-240V/ 6V20W
Package	Plan-concave Mirror
	Styrofoam
	Carton
	Wooden Case

Biological Microscope

MSC-B103(Siedentopf)



Description

This instrument complies with the ergonomic principle, with superior optical performance, long operation time and low observation fatigue. It is suitable for medical institutions at all levels to do research demonstration, routine laboratory examinations, biology, bacteriology, clinical trials and teaching.



Specifications

Model	MSC-B103(Siedentopf)
Viewing Head	Seidentopf Binocular Head, Inclined at 30, Interpupillary 55-75mm
Eyepiece	Wide Field Eyepiece WF10X18mm
Objective	Achromatic Objective 4X,10X,*20x,40X,100X
	Plan Achromatic Objective: 4x 10x, 20x, 40x, 100x
Nosepiece	Quadruple Nosepiece
Stage	Double Layers Mechanical Stage 115X125mm/ 70X30mm
Condenser	Abbe NA1.25 with Iris Diaphragm & Filter
Focusing System	Coaxial Coarse and Fine Adjustment, Fine Division 0.002mm, Fine Stroke 0.2mm per Rotation, Moving Range 20mm
Illumination	LED Lamp, Brightness Adjustable
	Halogen Lamp 6V 20W, Brightness Adjustable
Package	Styrofoam
	Carton
	Wooden Case

Biological Microscope

MSC-B103T(Sliding)



Specifications

Model	MSC-B103T(Sliding)
Viewing Head	Sliding Trinocular Viewing Head, Inclined at 45°, Interpupillary 55-75mm
Eyepiece	Wide Field Eyepiece WF10X18mm
Objective	Achromatic Objective 4X,10X,*20x,40X,100X Plan Achromatic Objective: 4x 10x, 20x, 40x, 100x
Nosepiece	Quadruple Nosepiece
Stage	Double Layers Mechanical Stage 115X125mm/ 70X30mm
Condenser	Abbe NA1.25 with Iris Diaphragm & Filter
Focusing System	Coaxial Coarse and Fine Adjustment, Fine Division 0.002mm, Fine Stroke 0.2mm per Rotation, Moving Range 20mm
Illumination	LED Lamp, Brightness Adjustable Halogen Lamp 6V 20W, Brightness Adjustable
Package	Styrofoam Carton Wooden Case
Filter	White Filter
Optional	Microscope Camera/Win10 pad/Digital display

Biological Microscope

MSC-B103T(Siedentopf)



Specifications

Model	MSC-B103T(Siedentopf)
Viewing Head	Siedentopf Trinocular Viewing Head, Inclined at 30°, Interpupillary 55-75mm
Eyepiece	Wide Field Eyepiece WF10X18mm
Objective	Achromatic Objective 4X,10X,*20x,40X,100X Plan Achromatic Objective: 4x 10x, 20x, 40x, 100x
Nosepiece	Quadruple Nosepiece
Stage	Double Layers Mechanical Stage 115X125mm/70X30mm
Condenser	Abbe NA1.25 with Iris Diaphragm & Filter
Focusing System	Coaxial Coarse and Fine Adjustment, Fine Division 0.002mm, Fine Stroke 0.2mm per Rotation, Moving Range 20mm
Illumination	LED Lamp, Brightness Adjustable Halogen Lamp 6V 20W, Brightness Adjustable
Package	Styrofoam Carton Wooden Case
Filter	White Filter
Optional	Microscope Camera/Win10 pad/Digital display

Biological Microscope

MSC-B201



Specifications

Model	MSC-B201
Viewing Head	Compensation free binocular head inclined at 30°Inclined Interpupillary (55-75mm)
Eyepiece	Wide Field eyepiece WF10X18mm , *WF16×, *WF20×, *WF10X22mm
Nosepiece	Quadruple Nosepiece
Objective	Achromatic Objective 4X,10X,40X,100X
Stage	Double Layers Mechanical Stage 140X135mm/ 75X50mm
Condense	Abbe NA1.25 with Iris Diaphragm & Filter
Focusing System	Coaxial Coarse and Fine Adjustment, Fine Division 0.002mm, Coarse Stroke 37.7mm per Rotation, Fine Stroke 0.2mm per Rotation, Moving Range 28mm
Illumination	3W LED Illumination, Brightness Adjustable
	Halogen Lamp 100V-240V/ 6V20W
	Plan-concave Mirror
Package	Styrofoam
	Carton
	Wooden Case
Filter	White Filter
Optional	Turret Phase Contrast Kit; Dark Field Attachment

Biological Microscope

MSC-B201T



Specification

Model	MSC-B201T
Optical System	Infinity Optical System
Viewing Head	Seidentopf Trinocular Head, Inclined at 30°,Interpupillary 55-75mm
Eyepiece	Wide Field Eyepiece WF10X18mm , *WF16×, *WF20×, *WF10X22mm
Objective	Infinite plan Achromatic Objective: 4×, 10×, *20×, 40×, 100× *Infinite Plan Phase Objective: Ph10x、 20x、 40x、 100x
Nosepeice	Quadruple Nosepiece/*Quintuple Nosepiece
Stage	Double Layers Mechanical Stage 140×135mm/75×50mm
Condenser	Abbe NA1.25 with Iris Diaphragm & Filter
Focusing System	Coaxial Coarse and Fine Adjustment, Fine Division 0.002mm, Coarse Stroke 37.7mm per Rotation, Fine Stroke 0.2mm per Rotation, Moving Range 28mm
Illumination	3W LED Lamp, Brightness Adjustable
	6V 20W Halogen Lamp, Brightness Adjustable
	Styrofoam
Package	Carton
	Wooden Case
	Filter
Optional	Turret Phase Contrast Kit; Dark Field Attachment Microscope Camera / Win 10 Pad / Digital display

Biological Microscope

MSC-B203



Specifications

Model	MSC-B203
Optical System	Infinite Optical System
Viewing Head	Seidentopf Binocular Head, Inclined at 30°, Interpupillary 50-75mm
Eyepiece	WF10×22mm Wide Field Eyepiece WF10×22mm; *WF16×; *WF20×
Objective	Infinite plan Achromatic Objective: 4×, 10×, *20×, 40×, 100× *Flour semi-apo objective: 4×, 10×, *20×, 40×, 100× *Infinite Plan Phase Objective: Ph10x、20x、40x、100x
Nosepiece	Quadruple Nosepiece/*Quintuple Nosepiece
Stage	Double Layers Mechanical Stage 210X150mm/ 75X50mm
Condense	Abbe Condenser NA1.25 with Iris Diaphragm & Filter
Focusing System	Coaxial Coarse and Fine Adjustment, Fine Division 0.002mm, Coarse Stroke 37.7mm per Rotation, Fine Stroke 0.2mm per Rotation, Moving Range 24mm
Illumination	LED Illumination, Brightness Adjustable
*Optional	Phase Contrast Kit; Dark Field Attachment; Fluorescent Attachment

*Optional configuration

Biological Microscope

MSC-B203T



Specifications

Model	MSC-B203T
Optical System	Infinite Optical System
Viewing Head	Siedentopf Trinocular Head, Inclined at 30°, Interpupillary 50-75mm
Eyepiece	WF10×22mm Wide Field Eyepiece WF10×22mm; *WF16×; *WF20×
Objective	Infinite plan Achromatic Objective: 4×, 10×, *20×, 40×, 100× *Infinite Plan Phase Objective: Ph10x、20x、40x、100x
Nosepiece	Quadruple Nosepiece/*Quintuple Nosepiece
Stage	Double Layers Mechanical Stage 210X150mm/ 75X50mm
Condense	Abbe Condenser NA1.25 with Iris Diaphragm & Filter
Focusing System	Coaxial Coarse and Fine Adjustment, Fine Division 0.002mm, Coarse Stroke 37.7mm per Rotation, Fine Stroke 0.2mm per Rotation, Moving Range 24mm
Illumination	LED Illumination, Brightness Adjustable
*Optional	Phase Contrast Kit; Dark Field Attachment 1.3M-20.M pixel Microscope Camera/win10 Pad/Digital display

Biological Microscope

MSC-B208(Siedentopf)

MSC-B208T(Siedentopf)



MSC-B208(Siedentopf)

MSC-B208T(Siedentopf)

Specifications

Model	MSC-B208(Siedentopf)/MSC-B208T(Siedentopf)
Viewing Head	Siedentopf Binocular/ Trinocular Head at 30°Inclined Interpupillary (55-75mm)
Eyepiece	Wide Field eyepiece WF10X18mm
Nosepiece	Quadruple Nosepiece
Objective	Achromatic Objective 4X,10X,40X,100X
Stage	Double Layers Mechanical Stage 140X135mm/ 75X50mm
Condense	Abbe NA1.25 with Iris Diaphragm & Filter
Focusing System	Coaxial Coarse and Fine Adjustment, Fine Division 0.002mm, Coarse Stroke 37.7mm per Rotation, Fine Stroke 0.2mm per Rotation, Moving Range 28mm
Illumination	S-LED Illumination, Brightness Adjustable
	Halogen Lamp 100V-240V/ 6V20W
	Plan-concave Mirror
Package	Styrofoam
	Carton
	Wooden Case
Filters	White Filter

Biological Microscope

MSC-B208(Sliding)

MSC-B208T(Sliding)



MSC-B208(Sliding)

MSC-B208T(Sliding)

Features

This instrument conforms to ergonomics, with low operation long time observation of fatigue, superior optical properties; suitable for all levels of medical institutions, do research demonstration Jishengjitong laboratory routine inspection, biology, bacteriology, clinical trials and teaching.

Specifications

Model	MSC-B208(Sliding)/MSC-B208T(Sliding)
Viewing Head	Sliding Binocular/ Trinocular Head at 45°Interpupillary (55-75mm)
Eyepiece	Wide Field eyepiece WF10X18mm
Nosepiece	Quadruple Nosepiece
Objective	Achromatic Objective 4X,10X,40X,100X
Stage	Double Layers Mechanical Stage 140X135mm/ 75X50mm
Condense	Abbe NA1.25 with Iris Diaphragm & Filter
Focusing System	Coaxial Coarse and Fine Adjustment, Fine Division 0.002mm, Coarse Stroke 37.7mm per Rotation, Fine Stroke 0.2mm per Rotation, Moving Range 24mm
Illumination	LED Illumination, Brightness Adjustable
	Halogen Lamp 100V-240V/ 6V20W
	Plan-concave Mirror
Package	Styrofoam
	Carton
	Wooden Case
Filters	White Filter

Biological Microscope

MSC-B107(Siedentopf/Sliding)

MSC-B107T(Siedentopf/Sliding)



Features

Solid square base, Comfortable and simple operation, multiple accessories collocation, provide you with simple and rich experience.

Objectives

Achromatic Objective

The use of fluorescent achromatic objective lens, low cost, meet the needs of daily fluorescence

Fluorescent Viewing

- ◆ Single channel fluorescent module/Dual channel fluorescent module
- ◆ Fluorescence filter group: DAPI, FITC, TRITC, Texas Red, GFP, CFP, CY5;
- ◆ Fluorescent Illumination: 100W Mercury Lamp Housing/5W LED Lamp.

Fluorescence filter group

High transmittance, high cut-off and deep cut-off depth filters are used to make the image brighter, contrast sharper and background darker.

Dark-field Viewing

It can be used for clearly viewing of blood or flagellum etc. fine structure.

Phase Contrast Viewing

Operators can get high contrast image of neutral background color whatever the magnifications are. It is suitable for viewing non-stained specimen.

Camera

USB 2.0 Camera : 5.0 M (EC 510 / TC 5.0) , USB 3.0 Camera (TC 6)



MSC-B107 Siedentopf

MSC-B107T Siedentopf

MSC-B107 Sliding

MSC-B107T Sliding

Specifications

Model	MSC-B107(Siedentopf/Sliding)/MSC-B107T(Siedentopf/Sliding)
Viewing Head	Binocular/ Trinocular Head at 45° Interpupillary (55-75mm)
Eyepiece	Wide Field eyepiece WF10X18mm
Nosepiece	Quadruple Nosepiece
Objective	Achromatic Objective 4X, 10X, 40X, 100X
Stage	Double Layers Mechanical Stage 140X135mm/ 75X50mm
Condense	Abbe NA1.25 with Iris Diaphragm & Filter
Focusing System	Coaxial Coarse and Fine Adjustment, Fine Division 0.002mm, Coarse Stroke 37.7mm per Rotation, Fine Stroke 0.2mm per Rotation, Moving Range 24mm
Illumination	LED Illumination, Brightness Adjustable
	Halogen Lamp 100V-240V/ 6V20W
	Plan-concave Mirror
Package	Styrofoam
	Carton
	Wooden Case
Filters	White Filter

Biological Microscope

MSC-B500SM



-  Comfortable and simple operation
-  With illumination system
-  Multiple accessories collocation



- With compensation free trinocular head
- Wide field eyepiece
- Double layer mechanical stage
- Multiple accessories collocation

Description

It has solid square base, comfortable and simple operation, multiple accessories collocation, which provide you with simple and rich experience.

Specification

Model	MSC-B500SM
Achromatic Objectives	4X、 10X、 40X (S) 、 100X (S、 Oil)
Eyepiece	Wide Field Eyepiece : WF10X、 (WF16X optional)
Viewing head	Compensation free trinocular head
Stage	Double Layer Mechanical Stage Size :125X135mm
Focusing	Coaxial Coarse and Fine Adjustment,Focusing Range 30mm,Focusing Interval 0.002mm
Condenser	Abbe NA=1.25 with Iris Diaphragm&Filter
Illumination	LED(1W) Lamp 220V or 110V ; (LED 3W lamp optional,)

Biological Microscope

MSC-B200E



- Comfortable and simple operation
- With illumination system
- Multiple accessories collocation

Description

It has solid square base, comfortable and simple operation, multiple accessories collocation, which provide you with simple and rich experience.



- **Eyepiece: Wide Field Eyepiece:**
WF10X、 (WF16X optional)



- **Achromatic Objectives :**
4X、 10X、 40X(S)、 100X(S、 Oil)

- With compensation free binocular head
- Wide field eyepiece
- Double layer mechanical stage
- Multiple accessories collocation

Specification

Model	MSC-B200E
Viewing Head	Compensation free binocular head inclined at 30°
Eyepiece	Wide field eyepiece : WF10X、 (WF16X optional)
Objective	Achromatic objectives 4X、 10X、 40X (S) 、 100X (S、 Oil)
Stage	Double layer mechanical stage size 125X115mm
Condenser	Abbe NA=1.25 with Iris Diaphragm&Filter
Focusing	Coaxial coarse and fine adjustment, focusing range 30mm, focusing interval 0.002mm
Illumination	Halogen Lamp 220V/6V20W or 110V/6V20W ; (LED lamp optional)

Inverted Microscope

MSC-IV100



Specifications

Model	MSC-IV100
Optical System	Infinite Optical System
Viewing Head	Trinocular Head Inclined at 30°, Interpupillary Distance 48-75mm
Eyepiece	EW10X/22 Extra Wide Field Eyepiece EW10X/22
Objective	LWD Infinite Plan Objective: 10×, 20×, 40× Infinite Plan Phase Objective: 10×, 20×
Nosepiece	Quintuple Nosepiece
Condense	ELWD Condenser NA 0.3, LWD 72mm (Without Condenser 150mm)
Centering Telescope	Centering Telescope (Φ30MM)
Phase Annulus	10X-20X、40X Phase Annulus Plate (Fixed)
Stage	Plain Stage 160X250mm; Glass Insert; Attachable Mechanical Stage, X-Y Coaxial Control, Moving Rang120X78mm; 70X180mm Auxiliary Stage 70X180mm; Terasaki Holder; Petri Dish Holder Φ35mm/Φ54mm/Φ90mm; Slide Glass Holder Φ54mm
Focusing	Coaxial Coarse and Fine Adjustment, Fine Division 0.002mm, Coarse Stroke 37.7mm per Rotation, Fine Stroke 0.2mm per Rotation, Moving Range up 8mm, down 3mm
Illumination	Halogen Lamp 6V 30W
Filters	Blue、Green and Ground Glass, Diameter 45mm
Accessories	Inverted Fluorescent Attachment Video Adapter with C Mount

Inverted Microscope

MSC-IV403



Specifications

Model	MSC-IV403
Viewing head	Trinocular Head Inclined at 45°, Interpupillary Distance 50-75mm
Eyepiece	WF10X/ 20mm
Objective	LWD Plan ObjectiveLWDPL4X\10X\20X\40X
Stage	Double layers mechanical stage, Stage size: 242mmx 172mm, Central stage: Φ110mm, Moving range: 75mm × 50mm
Condenser	N.A.0.3Abbe condenser W.D .75mm
Focusing	Coaxial coarse&fine focusing adjustment with rack and pinion mechanism Fine focusing scale Value 0.002mm
Phase contrast sliding plate	Center of phase contrast ring plate adjustable
Centering telescope	Centering telescope
Filter	Blue,green,yellow and froster glass
Light source	Halogen bulb12V/30W,Adjustable brightness
*Fluorescence attachment	B.GWave band ,220V(110V)/100W Mercury lamp
*Optional	Photograph connecting tube,adapter with MD or PK mount ,4X photograph eyepiece

Fluorescence Microscope

MSC-F107 MSC-F201 MSC-F107T MSC-F201T



Binocular Head
MSC-F201
Infinite Optical System



Trinocular Head
MSC-F201T
Infinite Optical System



Specifications

Model	MSC-F201	MSC-F201T
Optical System	Infinite Optical System	
Viewing Head	Seidentopf Binocular/ Trinocular Head,Inclined at 30°,Interpupillary 55-75mm	
Eyepiece	WF10×20mm	
Objective	Infinite plan Achromatic Objective: 4×, 10×, 40×, 100×	
	*Flour semi-apo objective: 4x, 10x, 20x, 40x, 100x	
	*Infinite Plan Phase Objective: Ph10x ,20x,40x,100x	
Nosepiece	Quadruple Nosepiece	
Stage	Double Layers Mechanical Stage 140X135mm/ 75X50mm	
Condense	Abbe Condenser N.A. 1.25 with Iris Diaphragm & Filter	
Focusing System	Coaxial Coarse and Fine Adjustment, Fine Division 0.002mm, Coarse Stroke 37.7mm per Rotation,	
	Fine Stroke 0.2mm per Rotation, Moving Range 22mm	
Illumination	LED Illumination,Brightness Adjustable	
	5W Fluorescent LED illumination, with adjustable brightness	
Fluorescent Attachment	DF-I fluorescent vertical illuminator.Equipped with a set of fluorescent channels.	
	DF-II fluorescent vertical illuminator equipped with two sets of fluorescence channels	
	DF-VI fluorescent vertical illuminator can be configured with three to six groups of fluorescent channels	

Binocular Head
MSC-F107
Achromatic Optical System



Trinocular Head
MSC-F107T
Achromatic Optical System



Specifications

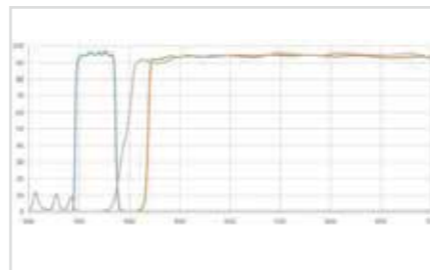
Model	MSC-F107	MSC-F107T
Viewing Head	Sliding Binocular/ Trinocular Head,Inclined at 45°, Interpupillary 55-75mm	
Objective	Siedentopf Binocular Head Inclined at 30°,Interpupillary (55-75mm)	
Objective	WF10×18mm	
Objective	Achromatic Objective: 4×, 10×, 40×, 100×	
	* Plan Achromatic Objective: 4x, 10x, 20x, 40x, 100x	
	* Plan Phase Objective: Ph10x、 20x、 40x、 100x	
Nosepiece	Quadruple Nosepiece	
Stage	Double Layers Mechanical Stage 140X135mm/ 75X50mm	
Condense	Abbe Condenser N.A. 1.25 with Iris Diaphragm & Filter	
Focusing System	Coaxial Coarse and Fine Adjustment, Fine Division 0.002mm, Coarse Stroke 37.7mm per Rotation,	
	Fine Stroke 0.2mm per Rotation, Moving Range 28mm	
Illumination	3W LED Illumination,Brightness Adjustable	
	5W Fluorescent LED illumination, with adjustable brightness	
Fluorescent Attachment	DF-I fluorescent vertical illuminator.Equipped with a set of fluorescent channels.	
	DF-II fluorescent vertical illuminator equipped with two sets of fluorescence channels	
	DF-VI fluorescent vertical illuminator can be configured with three to six groups of fluorescent channels	

Description

It has solid square base, comfortable and simple operation, multiple accessories collocation, which provide you with simple and rich experience.

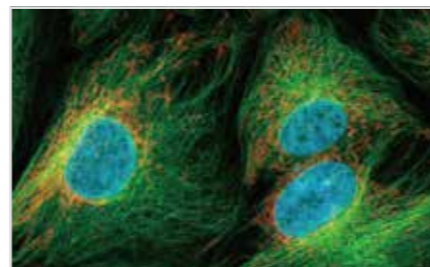
Objectives

MSC-F107/MSC-F107T:
Achromatic Objective
The use of fluorescent achromatic objective lens, low cost, meet the needs of daily fluorescence
MSC-F201/MSC-F201T:
infinite optical system



Fluorescent Viewing

Single channel fluorescent module/Dual channel fluorescent module.
Fluorescence filter group:UV、 V、 BV、 B、 G、 DAPI、 FITC;
Fluorescent Illumination:5W LED Lamp.



Flexible-efficient-clear-bright

DF-I
DF-I fluorescent vertical illuminator, equipped with a set of fluorescent channels, adopts high-brightness LED light source, has long lifespan, less heat, less damage to cells, effectively reduces dye quenching, and is easy to operate. It is widely used in dermatophyte fluorescence inspection, Respiratory virus testing, etc.

DF-II
DF-II fluorescent vertical illuminator is equipped with two sets of fluorescent channels, and the light source is linked with the fluorescent filter group, which is easy to operate. Using high-brightness LED light source, it has long lifespan, less heat, less damage to cells, and effectively reduces dye quenching. It is an ideal light source for clinical fluorescence observation. Widely used in gynecological double fluoroscopy and so on.

DF-VI
DF-VI fluorescent vertical illuminator can be configured with three to six groups of fluorescent channels, equipped with 100W HBO ultra-high pressure spherical mercury lamp, with high fluorescent brightness, wide spectrum, and uniform field of view. At the same time, a shutter is set at the front end of the vertical illuminator, which can cut off the fluorescent illumination at any time and protect the sample. Produces fluorescent images with bright colors and dark backgrounds. Widely used in FISH.

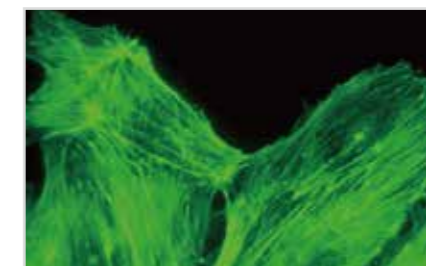
Fluorescence filter group

High transmittance, high cut-off and deep cut-off depth filters are used to make the image brighter, contrast sharper and background darker.



Fluorescent light source

DF series can be equipped with LED, ultra-high pressure spherical mercury lamp or metal halide light source.



Camera

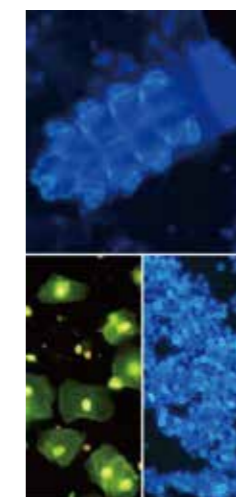
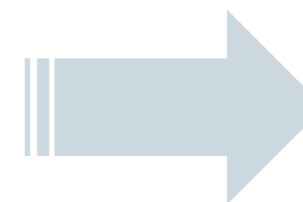
USB3.0 Camera(DC 500/630)



Single channel



Two-channel



Metallurgical Microscope

MSC-M201T MSC-M208T



MSC-M201T



MSC-M208T

Product introduction

Specially designed for materials exploration, it can meet the needs of surface microscopic inspection and screening of metallic materials, nonmetallic materials and geological materials. Mechanical structure stable, compact, ergonomic design, reasonable layout, comfortable use. The use of infinite optical system, long working distance, reliable imaging, high contrast.

Specifications

Model	MSC-M201T/ MSC-M208T
Optical System	Infinite Optical System
Viewing Head	Seidentopf Trinocular Head, Inclined at 30°, Interpupillary 55-75mm
Eyepiece	WF10×18mm
Objective	5X 0.12 WD23.6mm 10X 0.25 WD17.7MM 20X 0.40 WD10.4MM 50X 0.55 WD7mm
Nosepiece	Quadruple Nosepiece/*Quintuple Nosepiece
Stage	Double Layers Mechanical Stage 150×140mm/ 75X50mm
Condense	Abbe Condenser N.A. 1.25 with Iris Diaphragm & Filter
Focusing System	Coaxial Coarse and Fine Adjustment, Fine Division 0.002mm, Coarse Stroke 37.7mm per Rotation, Fine Stroke 0.2mm per Rotation, Moving Range 22mm
Incident Light	Kohler Illumination, Epi-illuminator with iris aperture diaphragm and iris field diaphragm, 6V/20W Halogen lamp, Brightness adjustable Kohler Illumination, Epi-illuminator with iris aperture diaphragm and iris field diaphragm, 3W LED illumination, Brightness adjustable
Transmitted Light	6V 20W Halogen Lamp, Brightness Adjustable LED Illumination, Brightness Adjustable
Filters	Blue, green, yellow, ground glass
*Optional	Fluorescent Attachment Microscope Camera/win10 Pad/Digital display
Optional configuration	

Inverted Metallurgical Microscope, Siedentopf

MSC-M4XC



Specifications

Model	MSC-M4XC
Extra Wide Field Eyepiece	WF10X/18, Eyepiece with Scale of Cross hair
WD Plan Achromatic Objective	PL L10X/0.25 WD 8.9mm
	PL L20X/0.40 WD 3.75mm
	PL L40X/0.60 WD 2.69mm
	SPL100X/0.90 WD 0.44mm
Optional Objective	PL L50X/0.70 WD 2.02mm
	PL L60X/0.75 WD 1.34mm
	PL L80X/0.80 WD 0.96mm
	PL L100X/0.85 WD 0.4mm
Viewing Head	Siedentopf trinocular viewing head, Inclined at 30°, Interpupillary 55mm-75mm
Illumination system	6V/20W Halogen light, brightness adjustable
	Polarizer and analyzer Green, Blue, Yellow Filter
Focusing	Coaxial coarse and fine adjustment, fine division 2um
Nosepiece	Backward quadruple nosepiece Optional: Backward quintuple nosepiece
Stage	Double layer mechanical stage 180X150mm, Moving range 15mmX15mm
Accessories	Photo/Video attachment; Micrometer scale 0.01mm

Polarizing/ Petrographic Microscope

MSC-P1 MSC-P1T



Binocular, MSC-P1



Trinocular, MSC-P1T

Specifications

Model	MSC-P1/MSC-P1T
Viewing Head	Seidentopf Binocular/ Trinocular Head inclined at 30°, Interpupillary 55-75mm
Eyepiece	WF10X18mm
Objective	Achromatic objective: 4X, 10X, 40X(s), 100X(s,o)
Nosepiece	Quadruple nosepiece
Analyzer	Rotatable analyzer with gradation 0°-90°; Sliding in/out of optical path
Optical Compensator	λ Slip (First class red); $1/4 \lambda$ Slip
Revolving Round Stage	Diameter ϕ 160mm, 360°Rotatable and graduate in 1° increments, Minimum resolution 6' when using vernier scale, Center adjustable
Condenser	Abbe Condenser NA 1.25 with Iris diaphragm & filter
Focusing	Coaxial coarse & fine adjustment, range 14mm, fine division 0.01
Polarizer	360°Rotatable located
Illumination	1WLED, Brightness adjustable

Polarizing/ Petrographic Microscope

MSC-P200 MSC-P200T



MSC-P200



MSC-P200T

Specifications

Model	MSC-P200/MSC-P200T
Viewing Head	Sliding Binocular/ Trinocular Head inclined at 30°, Interpupillary 55-75mm
Eyepiece	WF10X/18, WF10X/18mm with Scale of Crosshair 0.1mm
Objective	Strain Free Achromatic Objective: 4X, 10X, 40X, 63X
Nosepiece	Quadruple nosepiece
Analyzer	Rotatable analyzer with gradation 0°-90°; Sliding in/out of optical path
Bertrand Lens	Bertrand lens, Sliding in/out of optical path
Optical Compensator	λ Slip (First class red) $1/4 \lambda$ Slip
Revolving Round Stage	Diameter ϕ 160mm, 360°Rotatable and graduate in 1° increments, Minimum resolution 6' when using vernier scale, Center adjustable
Condenser	Abbe Condenser NA 1.25 with Iris diaphragm & filter
Focusing	Coaxial coarse & fine adjustment, range 35mm, fine division 0.002mm
Polarizer	360°Rotatable located
Illumination	6V/20W Halogen lamp, Brightness adjustable

Stereo Microscope (Dissecting Microscope)

MSC-ST40



Specifications

Eyeiece	MSC-ST40
Eyeiece	10X
Objective	1X/2X
	1X/3X
	1X/4X
Main Body	Binocular head, 45° inclined
Stand	Pole stand
Illumination	* LED illumination

Stereo Microscope (Dissecting Microscope)

MSC-ST45

MSC-ST45T



MSC-ST45



MSC-ST45T



Specifications

Model	MSC-ST45/MSC-ST45T
Magnification	Zoom objective 7X-45X
Eyeiece	WF10X/20mm high-eyepoint, wide-field; Convenient for observers wearing glasses *Optional Eyeiece15X/15mm, 20X/10mm, 25X/9mm, 30X/8mm
Main Body	MSC-ST45: Binocular head/MSC-ST45T: Trinocular head, 45° inclined, 360° rotatable, can be locked in any position desired. Interpupillary Distance adjustment:54-76mm; Diopter adjustment:±5 diopters
Objective	0.7X-4.5X stereo zoom; Zoom Ratio:6.4:1 *Aux Lens: 0.5X, 2X
Focusing Mount	Focusing mount with vertical working distance 50mm
Stand	Vertical Post: 240mm ; Diameter: φ 32mm; With φ 95mm B/W Plastic & Perspex Plate and Paired Clips; Base Size: 200x255x60mm
Illumination	Transmitted and reflected 12v/15w halogen; *LED illumination
C-Mount	SZM 1X C-Mount; *SZM 0.5X C-Mount; *SZM 0.3X C-Mount
Information:	3.5X-270X with optional eyeieces and objectives

Stereo Microscope (Dissecting Microscope)

MSC-ST60



Specifications

Eyeiece	MSC-ST60
Magnification	20X-40X, 10X-80X with optional eyepieces and objectives
Eyeiece	WF10X/20mm; *Optional Eyeiece: 10X/20mm, 15X/15mm, 20X/10mm
Main Body	Binocular head, 45° inclined, 360° rotatable, Interpupillary Distance adjustment:54-76mm; Diopter adjustment:±5 diopters
Objective	Shifting and doubling objective combination 2X/4X、 1X/2X、 1X/3X
Focusing Mount	Focusing mount with vertical working distance 50mm
Stand	Pole stand, for more options
*Illumination	Fluorescent lamp, LED ring light, for more option

Stereo Microscope (Dissecting Microscope)

MSC-ST7045

MSC-ST7045T



MSC-ST7045

Configurable Camera MSC-ST7045T



Specifications

Model	MSC-ST7045/MSC-ST7045T
Magnification	Zoom objective 6.7X-45X
Eyeiece	WF10X/22mm high-eyepoint, wide-field; Convenient for observers wearing glasses *Optional Eyeiece:15X/16mm, 20X/12mm, 25X/9mm, 30X/8mm
Main Body	MSC-ST7045: Binocular head/MSC-ST7045T: Trinocular head, 45° inclined, 360° rotatable, can be locked in any position desired. Diopter adjustment:±5 diopters Interpupillary Distance adjustment:54-75mm
Objective	0.67X-4.5X stereo zoom; Zoom Ratio:6.7:1 *Aux Lens: 0.5X, 2X
Focusing Mount	Focusing track mount with vertical working distance 104mm
Stand	Track Stand Vertical Height: 300mm; Mounting Size: φ 76mm; Focusing Distance: 106mm; With φ 95mm B/W Plastic & Perspex Plate and Paired Clips; Base Size: 205x275x40mm
Illumination	Top and bottom LED Illumination with an independent control; Input Power: 110v~240v
C-Mount	MSC 1X C-Mount; *MSC 0.5X C-Mount;
Information:	MSC-ST7045 3.35X-270X with optional eyepieces and objectives;

Teaching Microscope

MSC-T01 MSC-T02 MSC-T03



MSC-T03

Specifications

Eyepiece	MSC-T03
Viewing Head	Monocular Vertical Tube
Huygens Eyepiece	H10X,H16X (1)
185 Chromatance Objective	10X
	40X (s)
Nosepiece	100X (s,oil)
	Triple Nosepiece
Focusing System	Coarse Adjustment Range 50mm, Fine-tuning accuracy of 0.02
Stage	Plain Stage with Move the feet 120x120mm
Illumination	Reflectir
	LED Lamp (Optional)
Condenser	Abbe type light mirror N.A.1.20, with a variable appendix



MSC-T01

Specifications

Eyepiece	MSC-T01
Viewing Head	Monocular Vertical Tube
Huygens Eyepiece	H16X (1)
Objective	12.5X (s) Chromatance Objective
Nosepiece	Triple Nosepiece
Focusing System	Coarse Adjustment Range 20mm
Stage	Plain Stage with Slide Clips 100x90mm
Illumination	Reflectir
	LED Lamp (Optional)



MSC-T02

Specifications

Eyepiece	MSC-T02
Viewing Head	Monocular Vertical Tube
Huygens Eyepiece	H10X,H16X (1)
185 Chromatance Objective	4X
	10X
Nosepiece	40X (s)
	Triple Nosepiece
Focusing System	Coarse Adjustment Range 50mm, Fine Adjustment Range 1.8mm~2.2mm, Accuracy 0.01
Stage	Plain Stage with Slide Clips 110x110mm
Illumination	Reflectir
	LED Lamp (Optional)

Teaching Microscope

MSC-T08



MSC-T08



CE FDA

CE



Teaching Microscope

MSC-T08B



MSC-T08B

Specifications

Item	MSC-T08	
Viewing Head	Monocular Head	●
Eyepiece	WF10×	●
	WF16×	○
Objective	Achromatic Objective: 4×, 10×, 40×, 100×	●
Nosepiece	Quadruple Nosepiece	●
Stage	Double Layers Mechanical Stage 120X115mm/ 50X30mm	●
Condense	Abbe Condenser N.A. 1.25	●
Focusing System	Coaxial Coarse and Fine Adjustment, Fine Division 0.002mm	●
Illumination	LED Illumination, Brightness Adjustable	●
Note: ● standard layout / ○ Optional configuration		

Specifications

Item	MSC-T08B	
Viewing Head	Seidentopf Binocular Head	●
Eyepiece	WF10×	●
	WF16×	○
Objective	Achromatic Objective: 4×, 10×, 40×, 100×	●
Nosepiece	Quadruple Nosepiece	●
Stage	Double Layers Mechanical Stage 120X115mm/ 50X30mm	●
Condense	Abbe Condenser N.A. 1.25	●
Focusing System	Coaxial Coarse and Fine Adjustment, Fine Division 0.002mm	●
Illumination	LED Illumination, Brightness Adjustable	●
Note: ● standard layout / ○ Optional configuration		

液体长 东逝水

Digital Microscope With Video

MSC-V103



MSC-V103



Specifications

Model	MSC-V103
Viewing Head	10-inch display screen
Video Adapter	C Mount 0.5x
Objective	Plan Achromatic Objective: 4x, 10x, *20x, 40x, 100x
Nosepiece	Quadruple Nosepiece/*Quintuple Nosepiece
Stage	Double Layers Mechanical Stage 120X115mm/ 70X30mm
Condense	Abbe Condenser N.A. 1.25 with Iris Diaphragm & Filter
Focusing System	Coaxial Coarse and Fine Adjustment, Fine Division 0.002mm, Coarse Stroke 37.7mm per Rotation, Fine Stroke 0.2mm per Rotation, Moving Range 20mm
Illumination	LED Illumination, Brightness Adjustable
*Optional	Turret Phase Contrast Kit; Dark Field Attachment; Fluorescent Attachment Microscope Camera/win10 Pad/Digital display

Digital Microscope With Video

MSC-V201

MSC-V208



Specifications

Model	MSC-V201	MSC-V208
Optical System	Infinite Optical System	Finite distance Optical System
Viewing Head	10-inch display screen	
Video Adapter	C Mount 0.5x/1x	
Objective	Infinite Plan Achromatic Objective: 4x, 10x, *20x, 40x, 100x	Plan Achromatic Objective: 4x, 10x, *20x, 40x, 100x
Nosepiece	Quadruple Nosepiece/*Quintuple Nosepiece	
Stage	Double Layers Mechanical Stage 140X135mm, range of movement: 75X50mm	
Condense	Abbe Condenser N.A. 1.25 with Iris Diaphragm & Filter	
Focusing System	Coaxial Coarse and Fine Adjustment, Fine Division 0.002mm, Coarse Stroke 37.7mm per Rotation, Fine Stroke 0.2mm per Rotation, Moving Range 20mm	
Illumination	3W LED light, brightness continuously adjustable	
*Optional	Turret Phase Contrast Kit; Dark Field Attachment; Fluorescent Attachment Microscope Camera/win10 Pad/Digital display	

DC series USB3.0 CMOS camera

DC500 DC630 DC830 DC1800 DC2000



Description

The DSOEC camera system adopts Sony series CMOS sensor, adopts double-layer noise reduction technology, and has high sensitivity, low noise and ultra-high frame rate.

- DC series cameras integrate 12-bit ultra-fine hardware image signal processor video streaming engine; It realizes hardware demosaic adjustment, auto exposure, gain adjustment, one-click white balance, image chromaticity adjustment, saturation adjustment, gamma correction, brightness adjustment, contrast adjustment, etc. through this HISPVP. HISPVP transfers the traditional processing that should be processed by the computer CPU to the hardware processing, which greatly improves the transmission speed of the camera and reduces the occupancy rate of the CPU.
- Use USB3.0 data transmission technology to realize data transmission, fast and stable transmission.
- The DC series cameras can be used to capture brightfield or low light or fluorescence lightfield microscopy images.

Specification

Model	Sensor model and size	Pixel (μm)	G light sensitivity Dark current	FPS/Resolution	Sampling average	Exposure time
DC500	5.1M/MT9P006 1/2.5" (5.70x4.28)	2.2x2.2	1.76v/lux-sec 67.74dB38.5dB	14.0@2592x1944 29.4@1280x960 103.1@640x480	1x1 2x2 4x4	0.1ms~2s
DC630	6.3M/IMX178 1/1.8" (7.37x4.92)	2.4x2.4	425mv with 1/30s 0.15mv with 1/30s	30@3072 x2048 38@1536x 1024	1x1 2x2	0.1ms~15s
DC830	8.3M/IMX334 1/1.8"(7.68x4.32)	2.0x2.0	505mv with 1/30s 0.1mv with 1/30s	35@3840x2160 60@1920x1080	1x1 2x2	0.02ms~15s
DC1800	18M/SONY 1/2.2 "(5.86x4.46)	1.2 x1.2	130mv with 1/30s 0.1mv with 1/30s	17@4880x3720 40@2448x1836 50@1728x1296	1x1 2x2 3x3	0.1ms~15s
DC2000	20M/IMX183 1"(13.06x8.76)	2.4 x2.4	462mv with 1/30s 0.21mv with 1/30s	15@5440x3648 50@2736x1824 60@1824x1216	1x1 2x2 3x3	0.1ms~15s

Specification

Model	DC500 DC630 DC830 DC1800 DC2000
Hardware Configuration	
Spectral Response Range	380~650nm (with IR cut filter)
White Balance	ROI white balance/manual Temp-Tint adjustment
Color Reproduction Technology	Ultra-Fine™ hardware ISP video processing engine
Capture & Control API	Native C/C++, C#/VB.Net, directshow, twain and labview
Recording Method	Images and videos
Cooling Method*	Natural cooling
Camera Work Environment	
Working Temperature (°C)	-10~ 50
Storage Temperature (°C)	-20~ 60
Working Humidity	30~80%RH
Storage Humidity	10~60%RH
Power Supply	The camera is powered via the USB interface
Software Operating Environment	
Operating System	Microsoft® Windows® XP/ Vista / 7 / 8 /10 (32 & 64 bit)
	CPU: Intel Core 2 2.8GHz or higher
	Memory: 2GB or greater
	USB interface: USB3.0 high-speed interface (recommended) or USB2.0 interface
Computer Configuration	Display: 20" or above (recommended high color gamut display with a resolution of 22 inches or above and a resolution of 1920 × 1080 or above)
	CD-ROM

EC Series USB2.0 CMOS Camera

EC520



- EC camera with high sensitivity, low noise and high frame rate; It has automatic exposure, gain adjustment, one-click white balance, image chromaticity adjustment, saturation adjustment, gamma correction, brightness adjustment, contrast adjustment function.
- Utilize USB2.0 data transmission technology to realize data transmission, fast and stable transmission.
- EC series cameras can be used for the shooting of bright field or low-light microscopic images.

Specification

Model	Sensor model and size	Pixel (μm)	G light sensitivity Dark current	FPS/Resolution	Sampling average	Exposure time
EC520	5.0M/AR0521(C) 1/2.5" (5.70x4.28)	2.2x2.2	1.76v/lux-sec 67.74dB38.5dB	20.0@2592x1944	1x1	0.1ms~2s

Specification

Model	EC520
Hardware Configuration	
Spectral Response Range	380~650nm (With IR cut filter)
White Balance	Auto/Manual white balance adjustment
Color Reproduction Technology	Hardware ISP video processing engine
Capture And Control API	Native C/C++, C#, directshow, twain
Recording Method	Images and videos
Cooling Method*	Natural cooling
Camera Operating Environment	
Operating Temperature (C)	-10~ 50
Storage Temperature (C)	-20~ 60
Working Humidity	30~80%RH
Storage Humidity	10~60%RH
Electricity	Camera powered via USB
Software Operating Environment	
Operating System	Microsoft® Windows®XP/ Vista / 7 / 8 /10(32 & 64 bits)
Computer Configuration	CPU: Intel core 2 2.8GHz or higher
	RAM: 2GB or more
	USB interface: USB3.0 high-speed interface (recommended) or USB2.0 interface
	Display: 20" or above (recommended high color gamut display with a resolution of 22 inches or above and a resolution of 1920 * 1080 or above)
	CD-ROM