

QUALITY LAB ANALYZERS

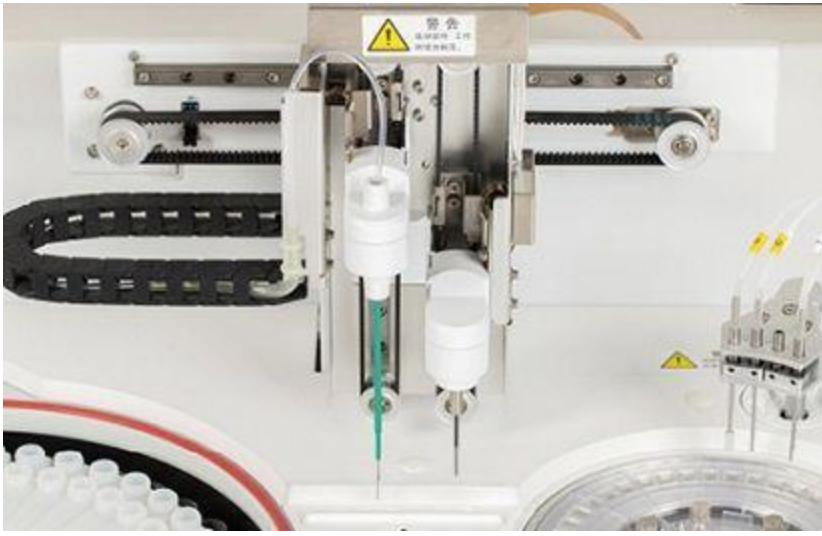
Fully-auto Biochemistry Analyzer, BA-A-160



- 150 Tests/Hour, Double Reagents
- 80 reagent positions, 40 sample positions
- 44 reaction cuvettes

DESCRIPTION

- Constant 150 test / hour with double reagent
- 80 reagent positions
- Automatic liquid level sensing, anti-collision protection.
- Integrated full closed optical system, multi wavelength simultaneous detection.
- New amorphous optical plastics reaction cups, perfect transmittance.
- Maintenance free semiconductor solid state refrigeration
- Friendly surface and easy to operation



Multifunctional precision sampling probe

- External & internal mirror polish, external & internal probe washing
- Dedicated sampling probe equipped with sensitive liquid sensor, timely feedback of reagent & sample residuals
- Collision protection, automatic probe depth adjusting

Excellent mixer design

- Teflon coating mixer. No water dropping(reducing carry-over)
- Excellent mixing effect with standard mixing procedure

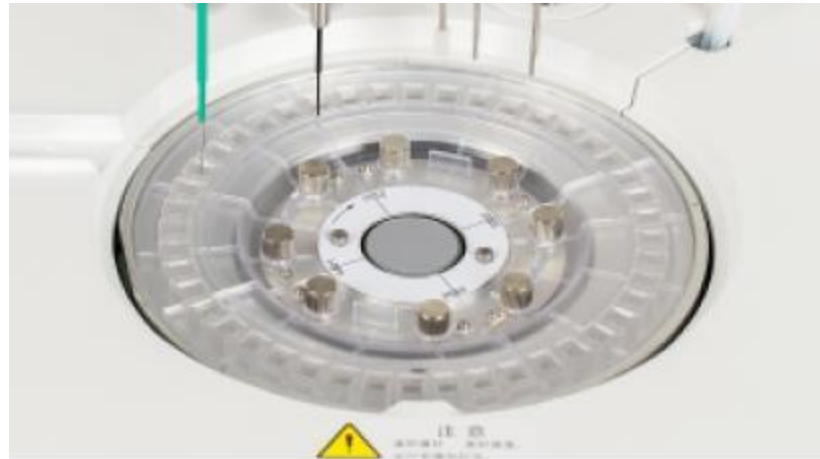
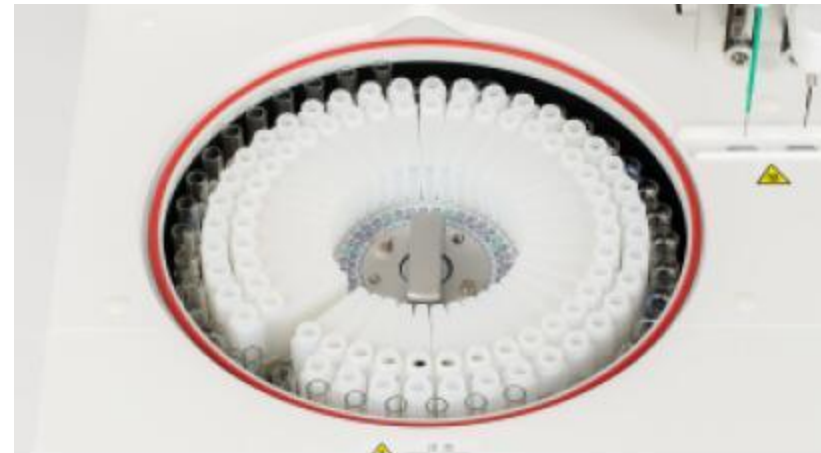


High precision ceramic syringe

- Permanent ceramic piston
- Accurate dispensing as low as 0.1ul

Reagent tray & Sample tray

- 80 reagent positions, 40 sample positions
- Non-stop cooling system with peltier pad inside, 24 hours 2°C-14°C
- Bar code reader(optional)

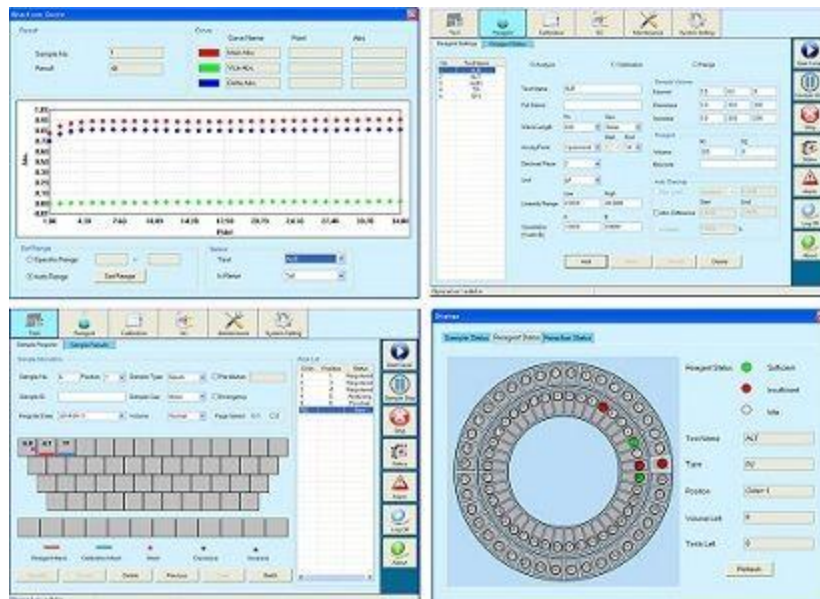


Reaction tray

- 44 reaction cuvettes
- Reaction volume as low as 150µl
- Stable & accurate temperature { 37 ± 0.1 °C} for reaction

Advanced operating system

- User friendly software interface simple, easy-to-operation
- Sample automatic dilution(decrease, increase, normal)
- Reaction result automatic checking and warning, calibration result automatic checking, warning alarm log
- Linear & nonlinear calibration, Multi-points calibration up to 8 points
- Quality control apply to westgard, L-T plot, cumulative



SPECIFICATIONS

General information

Machine type

Random access, open reagent & locked reagent (optional)

Test speed

Constant 150 tests/hour (Mono reagent or double reagent)

Test principle

Colorimetric method, turbidimetry

Test method

1 point end, 2 point end, Fixed-Time, Kinetics

Calibration type

Linear & nonlinear

Sample unit

Sample tray

40 sample positions

Sample tube

Micro cup & test tube & blood collection tube can be used.(ϕ 12 -13)mm * (25 -100)mm

Sample volume

2-30 μ L step by 0.1 μ L

Sample probe

Liquid surface detection, timely tracking for liquid volume.Collision avoidance

Sample barcode

Sample barcode reader (optional)

Reagent unit

Reagent tray	80 reagent positions (40 for R1 & 40 for R2), Non-stop cooling system with peltier pad inside, 24 hours 2°C-14°C, open system, could accept any reagent
Reagent volume	20-300µL, step by 1µL
Reagent needle	Liquid surface detection, timely tracking for liquid volume. Collision avoidance.
Reagent barcode	Reagent barcode reader (optional)

Reaction unit

Reaction tray	44 reaction cuvettes, new amorphous optical plastics reaction cups, perfect transmittance.
Reaction volume	150µL-330µL
Reaction time	10 minutes
Temperature	Peltier pad incubation system, reaction temperature (37°C ±0.1 °C)

Mixing system

Mixer	paddle-type mixing, effective reducing of carry-over
-------	--

Optical system

Light source	Halogen lamp
Wavelength	340nm; 405nm; 450nm; 505nm; 546nm; 578nm; 630nm; 700nm(4 more options)
Absorbance range	0-4.0 Abs
Resolution	0.0001 Abs
Operating system	
Operation system	Windows XP, Windows 7, Windows 8, Windows 10
Data processing	Automatic calibration, test combination, effective time management of reagents, serum index, whole process detection, linear expansion of enzyme, blank deduction,dirty cuvette memory , cross infection prevention, patient information memory and association input, automatic report audit, data fuzzy query, report statistics and printing, reference range grading, alarm information classification, user operation privilege classification management
Report printing	6 formats optional, support custom pattern
Interface	TCP/IP network interface
Working conditions	
Power supply	AC 110/220V ± 10%z 50/60 Hz, 650W
Water consumption	6L/hour(maximum)

Dimension	750mm * 475mm * 535mm(L*W*H)
Weight	80kg
Language	All languages