

# QUALITY LAB ANALYZERS

## Fully Automatic Biochemistry Analyzer, BA-A-120

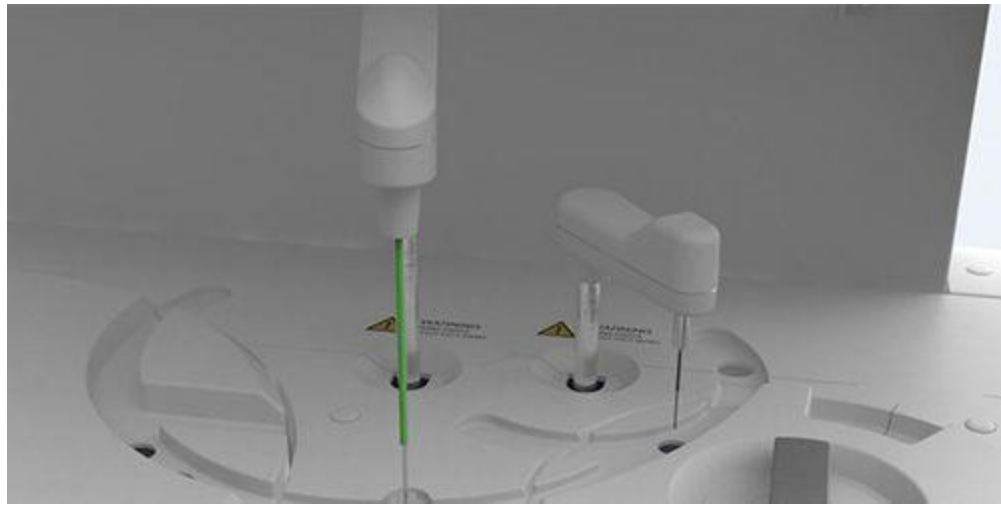


- 120 Tests/Hour, Double Reagents
- 80 reagent positions, 40 sample positions
- 50 reaction cuvettes
- Automatic liquid level sensing
- Integrated full closed optical system
- Maintenance free semiconductor solid state refrigeration

## DESCRIPTION

Biochemistry analyzer is used in a lab to check cholesterol, sugar, enzyme, protein, etc. by biological samples such as blood or urine. BA-A-120 Fully Auto Biochemistry Analyzer easy to operation with a throughput of 120 tests per hour

- Constant 120 test / hour with double reagent
- 80 reagent positions
- Automatic liquid level sensing, anti-collision protection.
- Integrated full closed optical system, multi wavelength simultaneous detection.
- New amorphous optical plastics reaction cups, perfect transmittance.
- Maintenance free semiconductor solid state refrigeration
- Friendly surface and easy to operation



### Multifunctional precision sampling probe

- External & internal mirror polish, external & internal probe washing
- Dedicated sampling probe equipped with sensitive liquid sensor, timely feedback of reagent & sample residuals
- Collision protection, automatic probe depth adjusting

### Excellent mixer design

- Teflon coating mixer. No water dropping(reducing carry-over)
- Excellent mixing effect with standard mixing procedure

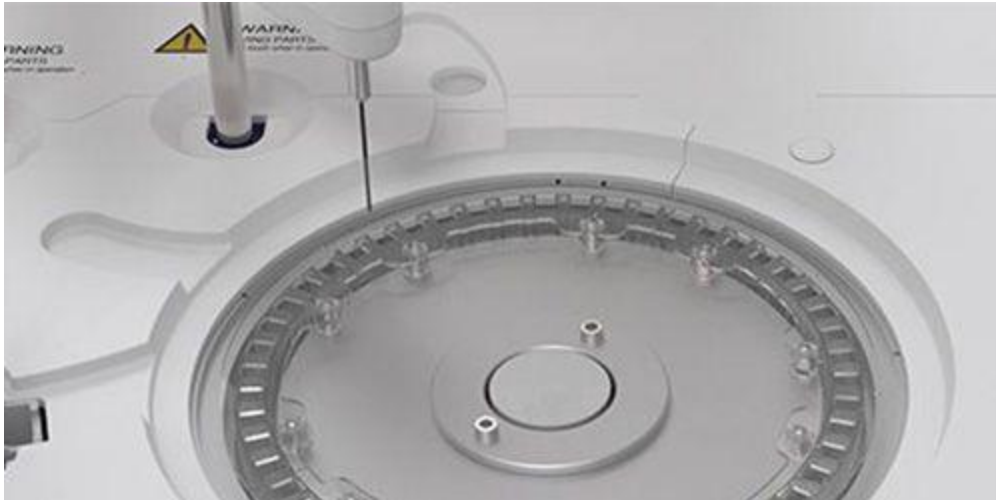


### High precision ceramic syringe

- Permanent ceramic piston
- Accurate dispensing as low as 0.1 $\mu$ L

## Reagent tray & Sample tray;

- 80 reagent positions, 40 sample positions
- Non-stop cooling system with peltier pad inside, 24 hours 2°C-14°C
- Bar code reader(optional)

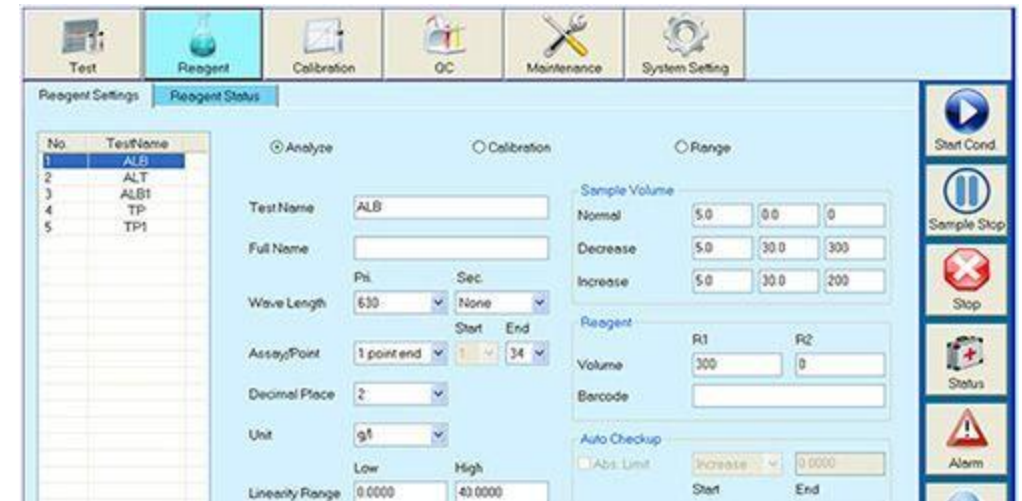


## Reaction tray

- 50 reaction cuvettes
- Reaction volume as low as 150µL
- Stable & accurate temperature (37±0.1°C) for reaction

## Advanced operating system

- User friendly software interface simple, easy-to-operation
- Sample automatic dilution(decrease, increase, normal)
- Reaction result automatic checking and warning, calibration result automatic checking, alarm log
- Linear & nonlinear calibration, Multi-points calibration up to 8 points
- Quality control apply to westgard, L-T plot, cumulative



warning

# SPECIFICATIONS

<b>General information</b>	
Machine type	Random access, open reagent & locked reagent (optional)
Test speed	Constant 120 tests/hour (Mono reagent or double reagent)
Test principle	Colorimetric method, turbidimetry
Test method	1 point end, 2 point end, Fixed-Time, Kinetics
Calibration type	Linear & nonlinear
<b>Sample unit</b>	
Sample tray	40 sample positions
Sample tube	Micro cup & test tube & blood collection tube can be used. ( $\Phi$ 12 -13 )mm *(25-100 )mm
Sample volume	2-30uL step by 0.1uL
Sample probe	Liquid surface detection, timely tracking for liquid volume. Collision avoidance
Sample barcode	Sample barcode reader (optional)
<b>Reagent unit</b>	
Reagent tray	80 reagent positions (40 for R1 & 40 for R2), Non-stop cooling system with peltier pad inside, 24 hours 2°C-14°C, open system, could accept any reagent
Reagent volume	20-300uL, step by 1uL
Reagent needle	Liquid surface detection, timely tracking for liquid volume. Collision avoidance

Regent barcode	Regent barcode reader (optional)
<b>Reaction unit</b>	
Reaction tray	50 reaction cuvettes, new amorphous optical plastics reaction cups, perfect transmittance.
Reaction volume	150uL-330uL
Reaction time	10 minutes
Temperature	Peltier pad incubation system, reaction temperature (37°C ±0.1 °C)
<b>Mixing system</b>	
Mixer	paddle-type mixing, effective reducing of carry-over
<b>Optical system</b>	
Light source	Halogen lamp
Wavelength	340nm; 405nm; 450nm; 505nm; 546nm; 578nm; 630nm;700nm(4 more options)
Absorbance range	0-4.0 Abs
Resolution	0.0001 Abs
<b>Operating system</b>	
Operation system	Windows XP, Windows 7, Windows 8, Windows 10
Data processing	Automatic calibration, test combination, effective time management of reagents, serum index, whole process detection, linear expansion of enzyme, blank deduction,dirty cuvette memory, cross infection prevention, patient information memory and association input, automatic report audit, data fuzzy query, report statistics and printing, reference range grading, alarm information classification, user operation privilege classification management.
Report printing	6 formats optional, support custom pattern

interface	TCP/IP network interface
<b>Working conditions</b>	
Power supply	AC 110/220V $\pm$ 10%, 50/60 Hz, 650W
Water consumption	6L/hour(maximum)
Dimension	750mm*550mm *490mm(L*W*H)
Weight	70kg
language	All languages